



Laura Fergusson Trust Wellington November 2015 Newsletter

18 Laura Fergusson Grove

Lower Hutt 5011

www.lft.org.nz

Like us on Facebook

(04) 567 6024

They say a picture paints a thousand words and to me the photos in this newsletter speak volumes about the folk who work and live at LFT and also those folk who so generously give to LFT.

There is just so much news and photos we want to share this issue that I'll keep my comments short and simply say what a privilege it was to be hosted at Government House by our patron Her Excellency Lady Janine Mateparae at our very successful Bridge and Mah-jong Day – thanks again to all of the ladies who helped with the immense organisation this event takes.

Thanks too to all of the bodies who have approved funding grants for LFT of late – these funds enable LFT's consumers to access services and facilities that otherwise would be unaffordable so we are all very, very grateful.

Senior staff at LFT often joke that it feels like we've been on a constant running wheel all year and it doesn't look like changing between now and Christmas – I do hope we will see you all at some point in the lead up or during the festive season to extend our yuletide wishes in person.

Karen Wilton

Chief Executive Officer

From Dream to Reality

LFT resident Ali Jodu has long dreamed of sharing his unique story. The recent publication of *Reality of the Imagination*, a book of his poetry, was the fulfilment of this dream.

Ali has been delighted to share his success and personal story at some special events. A launch of his book at Parliament in July, with the Minister for Disability Issues Hon Nikki Wagner, was followed by an invitation to meet the Prime Minister Hon John Key, with the assistance of local MP Chris Bishop.

The help and encouragement that Ali has received through the production process and following publication serves as a special reminder of the support that our extended community gives to LFT.

It has been an exciting journey for Ali, and we now understand that a sequel to *Reality of the Imagination* is already being penned!





Laura Fergusson Trust Wellington November 2015 Newsletter

18 Laura Fergusson Grove

Lower Hutt 5011

www.lft.org.nz

Like us on Facebook

(04) 567 6024

Board News

It was with regret that the recent Annual General Meeting noted both Rob Handyside and Charlotte von Dadelszen have stepped down as Trustees in the past year. Both have made a valued contribution and commitment to our Community during their membership periods. However, we are delighted to report that Rob will still be retaining a strong involvement with LFT – he will be hosting our World Café discussion forums on 14 and 16 November. We are also very grateful to Charlotte for continuing in her role as our pro bono solicitor (via her partnership at Buddle Finlay).

Changing Faces



Residents

Norman Povao and Jimmy McKeefry are welcomed to the LFT community.

Staff arrivals

We have recently welcomed Jennifer Cossar, Sharon Craig, Nerissa Gordon, Fatuma Guled, Sheetal Parasad, Suzette Rasool and Christie Shepherd to the LFT staff team.

We also welcome to New Zealand's shores two Danish students, Neli and Stephanie, who are working at LFT for a few months as part of the work experience component of their studies.

We hope your time at LFT is enjoyable and productive.

Staff departures

LFT sadly farewelled Ruth Balmocena, Karen Balmocena, Ruta Uiloa and Christine Fale from its staff.

We wish them all well with their future endeavours.

Congratulations

We offer our congratulations to LFT staff member, Analiza Ocampo, on her recent marriage.

We wish Analiza and Chevis all the best for their future life together.





Laura Fergusson Trust Wellington November 2015 Newsletter

18 Laura Fergusson Grove
Lower Hutt 5011
www.lft.org.nz
Like us on Facebook
(04) 567 6024

Bridge and Mah-jong Fundraising

Her Excellency Lady Janine Mateparae kindly hosted LFT's recent Bridge and Mah-jong Day at Government House on 21 October 2015.

The event is a major fundraising activity in LFT's calendar, and this year hosted attendees from as far afield as Palmerston North and Bulls.

LFT was delighted to raise almost \$12,000 this year, which will be used towards the cost of our new Transition Unit.



We offer our sincerest appreciation to Lady Janine and the staff at Government House for their hospitality and support, and to the organisers for their assistance.



LFT Transition Unit

At LFT we understand the importance of successful slowstream rehabilitation and community reintegration. We are very excited to be commencing construction of a special-purpose Transition Unit.

This purpose-designed unit will help people with disabilities gain the skills and confidence necessary to make the move from a fully-supported rehabilitative environment to more independent living in the wider community or with family/whānau.

The unit will be built alongside the house at 18a Laura Fergusson Grove that we have established as a communal home this year.

Our friends at Allied Maintenance will be starting construction shortly, and we are planning for the unit to be in full use by early January 2016.



Annual General Meeting and Annual Report

LFT's Annual General Meeting, held on 7 October, was attended by a large number of Community members – staff, whānau and residents.

If you haven't already seen our Annual Report please look at the copy on our website or request a copy from our reception.



Laura Fergusson Trust Wellington November 2015 Newsletter

18 Laura Fergusson Grove
Lower Hutt 5011
www.lft.org.nz
Like us on Facebook
(04) 567 6024

Funding Grants

LFT was delighted to learn that it will receive a \$15,000 Lottery Community Grant from the Lotteries Commission, for programmes costs. Our programmes are a major component of our rehabilitation activities and are well regarded by the region's disability sector.

We also acknowledge generous grants from Hutt Mana Charitable Trust (\$4,537 for the cost of a new hoist) and the Infinity Trust (a \$2000 grant towards community activities and events during this festive season).



Staff Training

Staff training is always a priority for LFT as we endeavour to provide the best possible care and support to our residents and community. Training opportunities in recent months include:

- Deaf Blind Signing
- Le Va Engaging Pasifika
- Difficult Conversations
- E-circle of Safety
- Food Safety
- First Aid
- Women's Health
- CareerForce

Satisfaction Surveys and Discussion Forums

Feedback from all our community members is very important to LFT.

On 14 November at 11am, LFT is holding World Café discussion forums for family/whānau and staff in the LFT Abilities Hub. All family/whānau and staff are invited to attend this hour-long session.

Residents' discussion forums will be held on 16 November.

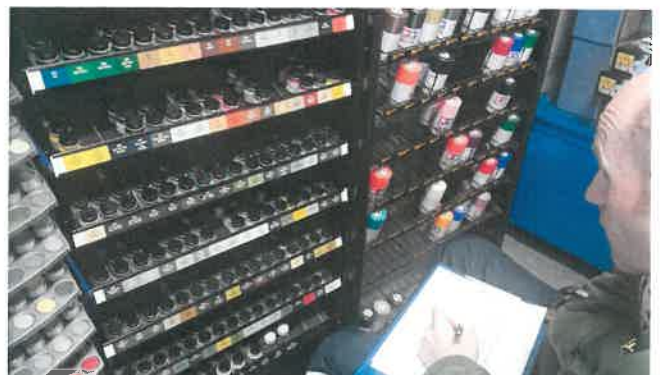
Our annual satisfaction surveys are also underway. Please contact LFT reception if you would like to participate.

Not Just Toys

Involvement with the wider community is an important aspect of residents' quality of life and rehabilitation. As such, we congratulate LFT resident Jamie Field on his new job at Not Just Toys model shop in Dudley Street, Lower Hutt.

Jamie will be doing stocktaking at Not Just Toys, which is a store that specialises in diecast trucks and cars, model kitsets, and the tools and paints to complete them. As a very keen truck enthusiast, we know that Jamie will enjoy this immensely.

We thank Steve at Not Just Toys for making this opportunity possible.





Laura Fergusson Trust Wellington November 2015 Newsletter

18 Laura Fergusson Grove

Lower Hutt 5011

www.lft.org.nz

Like us on Facebook

(04) 567 6024

Africa trip

Several residents recently had the opportunity to join a self-funded tour group with Epic Enabled to South Africa. Highlights of the trip included Table Mountain, Cape Point, Robben Island, Mandela House in Johannesburg, Soweto, the Big Five in Kruger, Tshukudu Bush camp and of course shopping. The unique African animals were a major source of excitement, with close encounters with many, including hippo, cheetah and honey badgers.



Summer Health

As the warm weather approaches, we respectfully remind family/whānau to be careful of bringing food to LFT residents, due to the higher risk of food poisoning. Please also be aware that many residents require special or restricted diets.

We also ask you to please **not** visit LFT if you have recently had an episode of vomiting or diarrhoea. Infectious diseases can spread very quickly through LFT.

Thank you: Thistle Inn

LFT was delighted to learn that the Thistle Inn (Mulgrave Street, Wellington) has chosen us as its Charity of the Month for November.

Thistle Inn is New Zealand's oldest surviving tavern and restaurant operating from its original site. We ask that LFT supporters back Thistle Inn during this festive season, in acknowledgement of this generous sponsorship.

Not just another Toy

Still on the subject of toys, LFT acknowledges the hardwork and craftsmanship of Lorne Smith, a member of the LFT community. Lorne made this beautiful timber dolls' house as part of BuildAbility, one of LFT's rehabilitation programmes. Standing about 60cm high, the house comes with its own matching handcrafted furniture.





Laura Fergusson Trust Wellington November 2015 Newsletter

18 Laura Fergusson Grove
Lower Hutt 5011
www.lft.org.nz
Like us on Facebook
(04) 567 6024

Winter activities

LFT has celebrated some memorable events in recent months – there is no better way to deal with a very wet Wellington winter than party through it! We thank everyone who organised and participated in White Sunday celebrations, the disco, 'Lord of the Dance' and 'Singing in the Rain', and made these and other outings and events so enjoyable.



Upcoming Celebrations

This year we are going to celebrate Thanksgiving. On 26 November, we will count our blessings with food and fellowship.

As part of our celebration of the festive season, we will be holding an LFT Community Christmas dinner at the Pavilion in Days Bay on the evening of 10 December.

All boccia players are invited to LFT's combined boccia Christmas afternoon tea and prize-giving, at 1pm on 15 December in the LFT Abilities Hub.

Please contact LFT's reception for more details.



Christmas gift ideas

Stuck for Christmas gift ideas for a resident at LFT? Here are our suggestions of items that we think will be appreciated by many of our residents:

Clothing

Underwear, socks, tee-shirts, pyjamas, sunhats

Vouchers

Movies, manicures, taxi and travel vouchers, cellphone top-ups, Snapper top-ups, pre-paid community and LFT programmes, tickets for shows or exhibitions

Personal care and toiletries

Shampoo, toothpaste, razors, tissues, sunscreen, deodorant, aftershave, towels, bedding

Hobby items

Books, magazine subscriptions, puzzles, craft supplies, CDs, pot-plants

We wish you all a safe and relaxing festive season